

New to Raspberry Pi AI? Start with Seeed!

reComputer AI R Series

The World's Most Powerful Raspberry Pi AI Box

At least 10-year lifetime



\$249 8GB
Commercial Grade
RPI 5



\$279 8+32GB
Industrial Grade
RPI CM 5

Hailo AI Accelerator
Up to **26 TOPS**



Features

-  **Up to 16GB RAM & M.2 Slot for AI Extension**
Enhance high-speed SSD storage and AI acceleration
-  **Advanced Video Processing**
4K 60fps H.265 decoder supporting 2-8 real-time (720p) multi-stream inferences for object detection and tracking

-  **Rich Connectivity**
2x HDMI, 1x Gigabit Ethernet, 2x USB 3.0
-  **Enhanced Reliability**
Industrial version includes additional PoE, 4G/Lora, TPM, and RTC

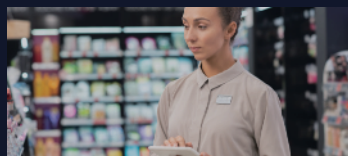
Applications



Network video recording (NVR)



Digital signage



Smart retail



Smart transportation

reComputer AI R Series Comparison

Choose the One That Fits You!

	Parameter	Description	
Hardware Spec	Product Series	reComputer AI R2000	reComputer AI Industrial R2000
	Platform	Raspberry Pi 5	Raspberry Pi Compute Module 5
	CPU	2.4GHz quad-core 64-bit Arm Cortex-A76	
	GPU	VideoCore VII	
	AI Processor	Hailo-8 M.2 Acceleration Module, 26 Tera-Operations Per Second	
	RAM	2GB/4GB/8GB/16GB	
	eMMC	/	0GB/16GB/32GB/64GB
System Spec	Operating System	Raspbberri Pi OS, Ubuntu	
	Video Decoder	4Kp60 HEVC decoder	
	Power Supply	5V/5A DC power via USB-C, Power Delivery supported	DC 9V~36V, 2-pin Terminal Block
Interface	USB	2 x USB 3.0, USB-A; 2 x USB 2.0, USB-A	2 x USB 3.2, USB-A; 1 x USB 2.0, USB-C, for debug and update OS;
	Display	2 x micro HDMI Ports, HDMI 2.0	2 x Standard HDMI Ports, HDMI 2.0
	Ethernet	1x 10/100/1000 Mbps, RJ45	
	SDcard Slot	1 x microSD card slot	/
	M.2 Slot	2 x PCIe 3.0 to M.2 slot, M.2 M-key 2280	1x USB 3.0 to M.2 slot, M.2 M-key 2280; 1x PCIe 3.0 to M.2 slot, M.2 M-key 2242;
	Mini-PCIe Slot	/	1x Mini-PCIe for 4G/LoRaWan module
	SIM Card Slot	/	1x Standard SIM Card Slot
	Audio	/	1x 3.5mm Audio Jack
Wireless Communication	Wi-Fi	Dual-band 802.11ac Wi-Fi®	
	Bluetooth	Bluetooth 5.0/ BLE	
	4G Cellular	/	4G LTE (Optional)
Ambient Conditions	Ingress Protection	IP40	
	Operating Temperature	0-45°C	-20~65 °C
Others	Warranty	1 Years	2 Years
	Watchdog	Hardware WatchDog	
	RTC	High Accuracy RTC	
	Security	/	Encryption Chip TPM2.0/ATECC608A (Optional)
	Heat Dissipation	Heatsink with Fan	

Raspberry Pi® AI from Zero to Hero - Learn with Seed Github Course!

1 Introduction to AI

2 Set up your Raspberry Pi® and AI Kit

3 Computer Vision Projects and Practice

4 LLM

5 Custom Model Development and Deployment

6 Raspberry Pi® and AIoT

